

**FIND**

Where could  
you look?

**FIND**

Is it reliable?

**FIND**

Is it  
accessible?

**FIND**

Is it thought-  
provoking?

**FIND**

Is it relevant  
for your  
context?

**FIND**

What's the  
agenda?

**FIND**

Is it reactive or  
dynamic?

**FIND**

Will it start  
conversations?

**FIND**

Does it build on  
conversations  
you've already  
had?

**FIND**

**FIND**

**FIND**

**FIND**

**FIND**

**FIND**

**FIND**

**FIND**

**FIND**

**ENGAGE**

What is this research about?

**ENGAGE**

What is the key message for you?

**ENGAGE**

How does it connect to your context or experience?

**ENGAGE**

How does it connect to other research?

**ENGAGE**

Does it matter in your context?

**ENGAGE**

What questions does it raise for you?

**ENGAGE**

Does it leave you with something to say?

**ENGAGE**

Is there a way to visualise its message differently?

**ENGAGE**

Does it confirm or challenge your thinking?

**ENGAGE**

Why was it written?

**ENGAGE**

Why has this format been used?

**ENGAGE**

Does it offer insight, guidance, critique, creativity or none of the above?

**ENGAGE**

Can you think of more than one way to interpret it?

**ENGAGE**

What are its strengths and limitations?

**ENGAGE**

What (if anything) is being claimed?

**ENGAGE**

How far is the research presented as 'certain'?

**ENGAGE**

What else does it make you want to know?

**ENGAGE**

Do you know anything about how the research was carried out?

**ENGAGE**

Who has produced  
this research?

**ENGAGE**

Where would you  
go to find out  
more about this?

**ENGAGE**

**ENGAGE**

**ENGAGE**

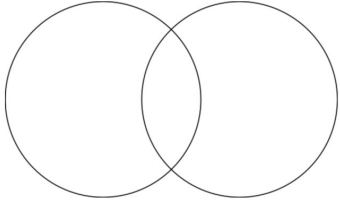
**ENGAGE**

**ENGAGE**

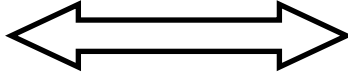
**ENGAGE**

**ENGAGE**

**Respond**



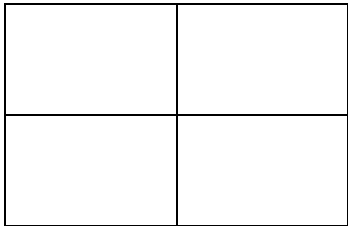
**Respond**



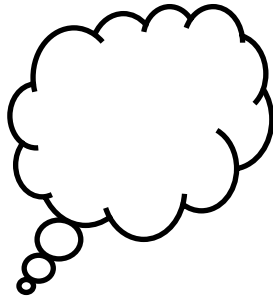
**Respond**



**Respond**



**Respond**



**Respond**



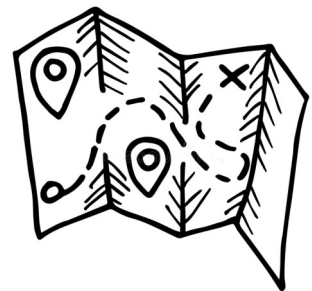
**Respond**



**Respond**



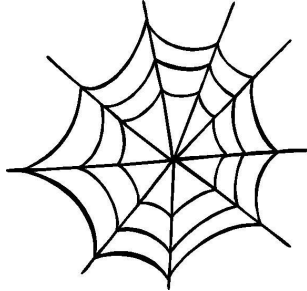
**Respond**



**Respond**



**Respond**



**Respond**

**Respond**

**Respond**

**Respond**

**Respond**

**Respond**

**Respond**

